

Reveloc AVL

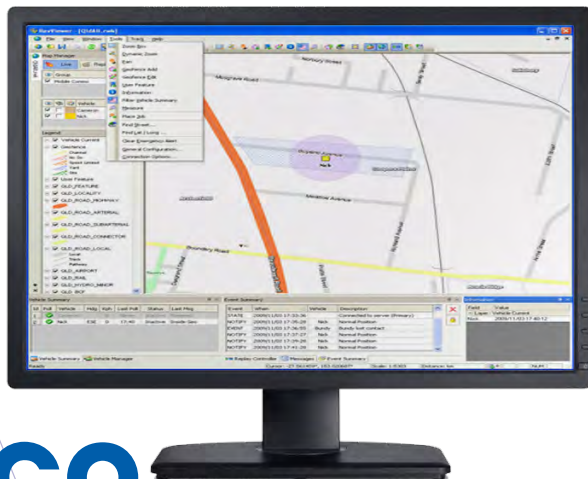
Reveloc, short for Remote Vehicle Locator, is a scalable, Microsoft Windows based software solution for monitoring the location of remote vehicles / personnel from a centralised location

Depending on the type of communications media being utilised, GPS capable remote devices can either send in unsolicited positions, be polled individually, or be polled as part of a group. Polling can also be performed on an ad hoc basis or continually according to a flexible, user customisable polling schedule.

Reveloc can monitor all radio equipped resources during migration from MPT1327 to DMR. (Solution requires radios with unique individual IDs and a mobile gateway radio on each network)

Features

- Single PC or WAN/LAN based solution
- Supports simultaneous connection to multiple gateway radios
- Support mixed manufacturer hardware fleets
- Simple database structure for integration with corporate GIS
- Wide variety of map formats supported
- Vehicle ignition/Telemetry monitoring
- Geofencing support (server)
- Short Data Message support
- Realtime position export to KML for Google Earth network distribution
- SOS alerting and SMS/Email broadcast



Reveloc AVL

Specifications

Server Application

- Server Geofencing (No-Go, Confinement, Speed and Blast)
- Events Management (Proximity, Stationary and or Speeding)
- Logging of Job Assignments
- Dynamic KML file update for Google Earth Network Link integration
- Optional Redundancy

Supports

Database Platforms:

- SQL Express 2005/2008
- Microsoft Access
- MSDE 2000

Image and Map formats:

- Vector - dng, dxf, sgp, tab
- GIS map - Bitsts, OSM
- Raster - bmp, ecw, jpg, tif

Client Application

- Event Management: manage and record contractor jobs, automate proximity messages/ alarms
- Mining: Track and manage equipment and staff
- Remote Monitoring: Road crew, council workforce, alarms
- Security: Track and manage proximity, Duress, Emergency
- Mass Transport: Vehicles, boats, busses, trains, etc

