

Mimer X-Link

Connecting radios all over the world

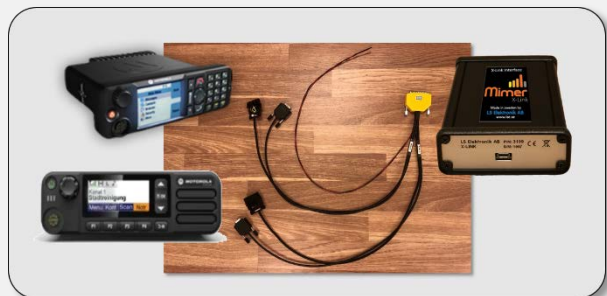
Mimer X-Link

Mimer X-Link [cross-link] gives you the ability to bridge almost any two radio systems. You only need to connect one radio from each system to the interface. Incoming audio on one radio will be re-transmitted on the other radio and vice versa.

In many cases radio channels/talk groups from different systems needs to work together. For example airband channels together with ground channels at an airport, or harbour channels together with marine channels at a port.

Bridge these systems:

- Analogue VHF to UHF
- Airband to ground
- Analogue to a DMR
- Analogue to a Tetra
- Tetra to a DMR
- Tetra to Tetra
- MPT to DMR
- Tetra to APCO
- Radio to PA-system
- Radio to PoC / Wave



The parts you need; radios, cable kit and the interface

The heart of the X-Link is a small interface (130x80x30mm) that connects to both radios. The interface has settings for audio levels and detection of reception as well as triggering of the PTT.

- Stand alone system, when setup, it runs by itself
- Handles analogue radios as well as digital radios
- Uses the PEI port on Tetra radios



X-Link Interface

LS Elektronik AB

Markets

- Airports
- Public Safety
- Harbours
- Borders
- Industry

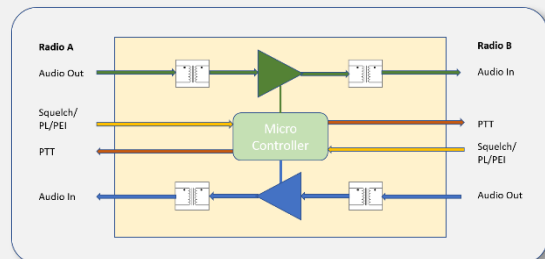


Examples of use



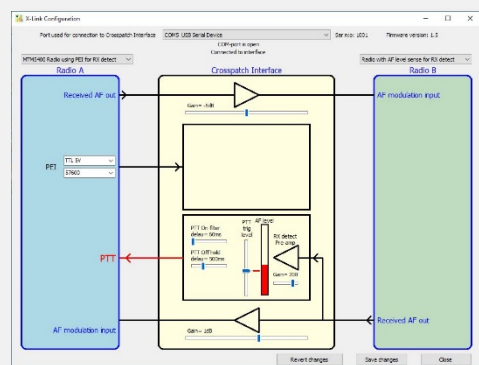
Basic parts

This simplified drawing shows the basic parts in the interface. All audio ports have transformers to avoid disturbances. The micro controller handles the Rx detection, PTT and the amplifying levels.



Setting up the X-Link

When setting up the system for the first time, the audio levels in/out of the interface needs to be tuned. Also the trigger of incoming audio needs to be set so that PTT is done on the other radio. To do these settings a small Windows tool is used on a standard PC. Connection to the interface is done through a USB cable.



Setup software

To make a complete kit, we provide cables to fit different radio types. We also provide guides for those who prefer to build the cable kits themselves. We can also deliver a ready to run setup on a rack shelf, including power supply etc.