



smartbridge  
Dispatcher

## Overview

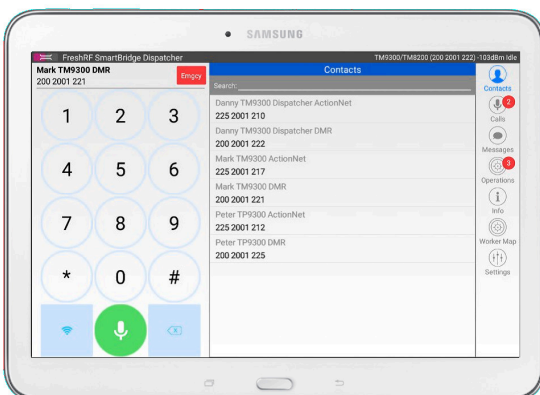
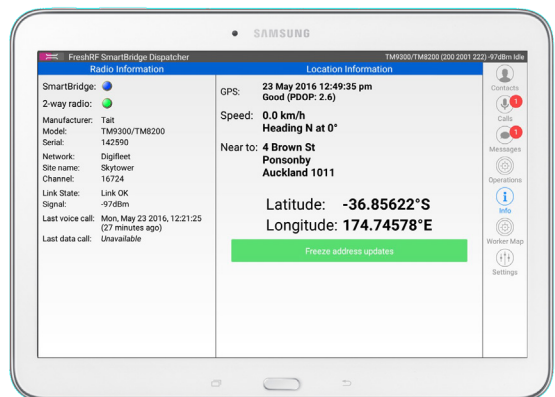
SmartBridge Dispatcher is designed to combine the key elements dispatchers need for communicating and managing radio users in the field; voice, messaging and to show where those units are on a map. The app is touch optimised making its use and navigation as simple as any tablet app. Being an app downloaded and installed from the Google Playstore, it also updates automatically so you have no software support or upgrade issues.

Download SmartBridge Dispatcher on **Google Play**



## Comprehensive Radio Dispatcher Solution

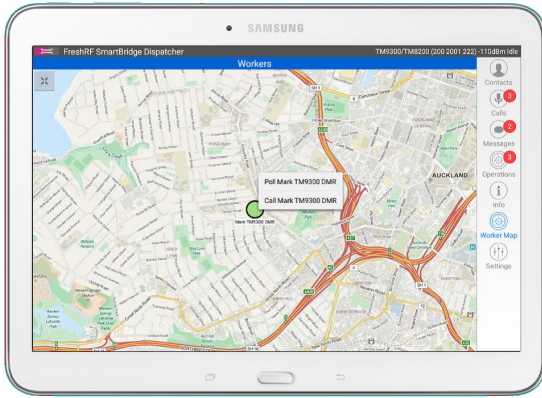
- Installed and operational in under 15 minutes.
- Automatic upgrades to every dispatcher just like any app.
- AVL and mapping standard.
- Setup standard operations and reduce voice traffic by utilising status and message capabilities.
- Single and group calls.
- All operational controls for radio eg stun, DND, divert, using check boxes not long # \* key commands.



## Contacts and IT integration

SmartBridge provides a straightforward way to integrate radio into your IT environment. Contacts and their radio IDs are managed either on the device via the contacts application, or through Exchange or Google Contacts simplifying the process of updating contacts.

Users can “flick” up/down, or type to find a contact, and then simply tap on the contact to call their radio. It is intuitive and simple to use removing training overhead.



## Full AVL and comms from map

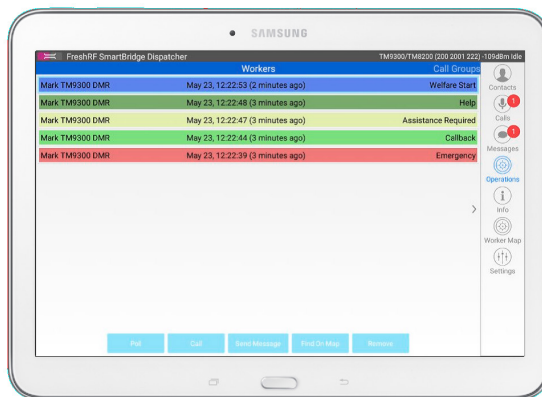
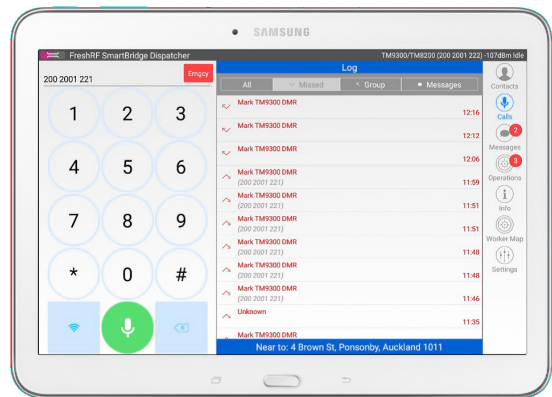
Display vehicles and field workers on a map, with added ability to tap and call or poll the worker. Using well understood “tap, pinch, zoom” navigation users can easily see where units are, and initiate comms directly from the map. Units are colour coded to make it easy to see if they are active or not. Map data is global and can be cached on the units if they are going to be offline, eg in SAR operations.

## Full call and message log

A complete call and message log. Calls and messages in/out and missed calls. Simply “flick” up and down the call log to find the call, and tap to call or message.

See who is calling, and answer at the tap of the screen. Soft PTT from the screen, or use your preferred microphone.

Indicator of missed calls, messages, and operational status updates on the menu so it’s simple to see what you missed! No more wondering why the radio is beeping at you!



## Start using radio for Operations, not just comms.

SmartBridge Dispatcher makes it simple to start using the radio status capability to simplify dispatcher and field user communications.

A dispatcher may receive multiple operation status updates from multiple field users, they can quickly see ones that demand urgent attention, such as an “Emergency”, which would take priority over an “Call Back” status notification.

### Notes

.....

.....

.....

.....

.....



**smartbridge**  
Dispatcher